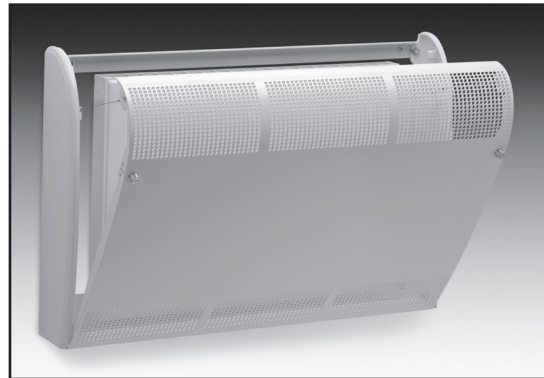
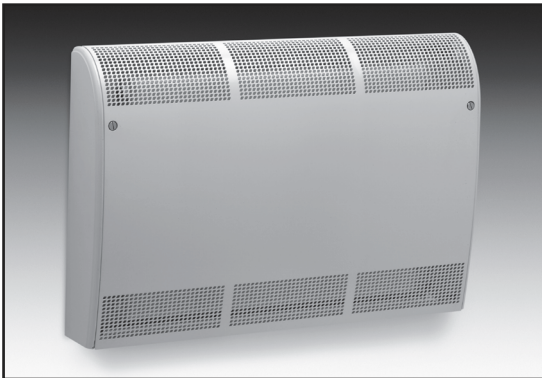


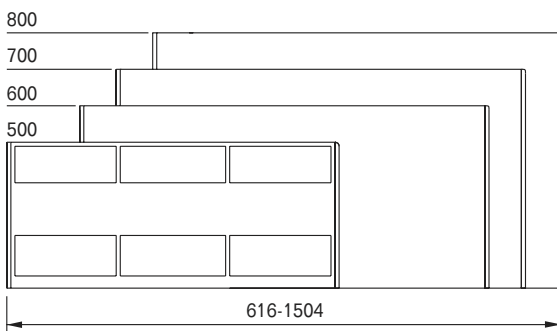
# LST Care™



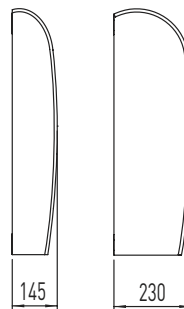
## Features

- Unique, aesthetically pleasing appearance
- Strong and durable with 2 mm steel front and cast iron end panels
- Smooth curved design for personal safety
- Tamper and vandal proof by means of bolted or lockable catches / anti-lig
- Conceals and protects pipework and valves
- Casing tilts for access to controls and for cleaning
- Integral stamped grilles facilitate cleaning and prevent dust accumulation
- Wide range of radiators can be used, contact Hudevad
- Meets NHS Estates Health Guidance Note (March 1998)
- Built-in valve (remote sensor option)

### Height and length



### Profil



## Material

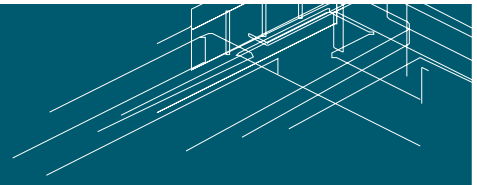
Front panel: 2 mm steel to DIN 1614, EN 10111  
 End panel: Cast iron or milled panel

## Mounting

Wall mounted at floor level or above floor level

## Colour

Powder coated in white RAL 9010  
 Ready-painted in other RAL and BS colours  
 Anti Bacterial paint is used as standard on the LST cover



## Output

### LST Care™:

Output variations, when the radiator is used with LST Care™ casing

Casing mounted at floor

Casing		Radiator					
Height mm	Height mm	Fionia 68/98	Plan 40	Plan 60	Plan 80	P5	P5K
800	600	-9%	-5%	-6%	-6%	-6%	-6%
	500	-3%	-1%	-2%	-2%	-2%	-2%
	400	0%	+2%	+1%	+1%	+1%	+1%
	300	+3%	+5%	+4%	+4%	+4%	+4%
700	500	-8%	-6%	-7%	-7%	-5%	-5%
	400	-5%	-3%	-4%	-4%	-4%	-4%
	300	-1%	+1%	0%	0%	0%	0%
600	400	-10%	-8%	-9%	-9%	-5%	-5%
	300	-7%	-5%	-6%	-6%	-2%	-2%
500	300	-5%	-5%	-6%	-6%	-5%	-5%

Casing mounted above floor

Casing		Radiator					
Height mm	Height mm	Fionia 68/98	Plan 40	Plan 60	Plan 80	P5	P5K
800	700	+8%	-6%	-7%	-7%		
	600	-5%	-3%	-4%	-4%	-4%	-4%
	500	-1%	+1%	0%	0%	0%	0%
	400	+2%	+4%	+3%	+3%	+3%	+3%
	300	+5%	+7%	+6%	+6%	+6%	+6%
700	600	-9%	-7%	-8%	-8%	-5%	-5%
	500	-6%	-4%	-5%	-5%	-3%	-3%
	400	-3%	-1%	-2%	-2%	-2%	-2%
	300	+1%	+3%	+2%	+2%	+2%	+2%
600	500	-11%	-9%	-10%	-10%	-6%	-6%
	400	-8%	-6%	-7%	-7%	-3%	-3%
	300	-5%	-3%	-4%	-4%	0%	0%
500	400	-9%	-7%	-8%	-8%	-6%	-6%
	300	-5%	-3%	-4%	-4%	-3%	-3%
400	300	-8%	-6%	-7%	-7%	-6%	-6%

**NOTE:** When the radiator is considerably lower than the casing the output will increase due to chimney effect

Below please note standard specification clauses which give an accurate technical description of the product. The texts relate to the most common products and are stated in the same order.

## LST Care™

Hudevad LST Care™ low surface temperature casing according to NHS Estates Health Guidance Note (March 1998). System comprising curved front panel(s) of 2 mm steel with perforated inlet and outlet grilles, and cast iron end panels, smoothly rounded. Front panel(s) tilts forward for cleaning and maintenance and is secured with tie wires. Electrophoresis primed and ready-painted with oven dried powder coat or wet coat. Surface treatment in accordance with DIN 55900 and BS EN 442. As heat emitter, a Hudevad radiator model Plan® is used.